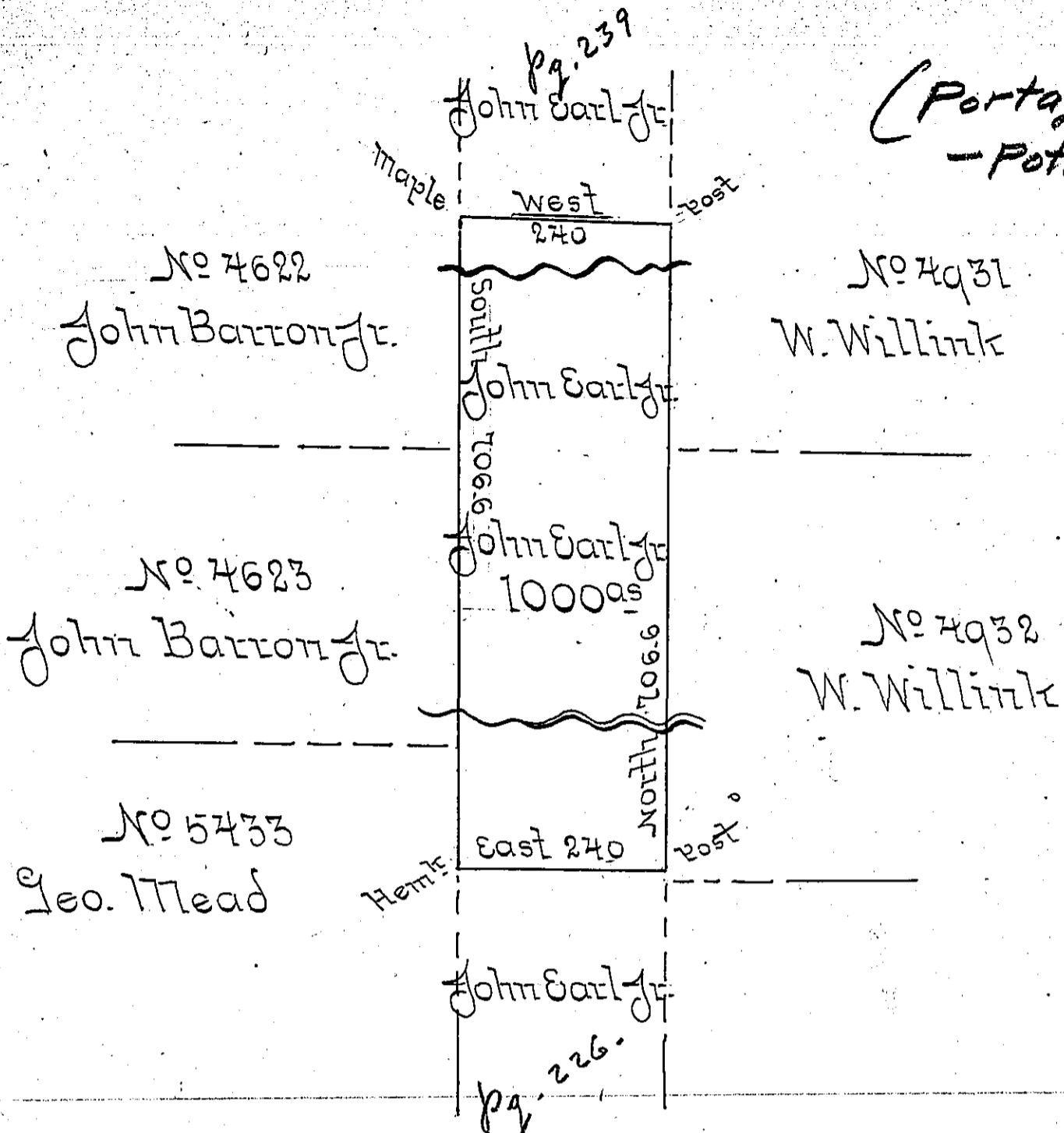


(Portage - Potter)



In pursuance of a Warrant dated Dec 24th A.D. 1855 granted to John Earl Jr. for one thousand Acres of unimproved Land I have surveyed on the 3^d day of January A.D. 1856 the Above described Tract of Land situate in Wharton and Portage Township in Potter County on the Waters of the Sinnamahoning and containing one thousand Acres Land with the usual Allowance of six per cents for Roads &c.

To J. Porter Brawley Esq. }
 Surveyor General }
 Salmon F Robinson
 Surveyor of
 Potter County

IN TESTIMONY that the above is a copy of the original remaining on file in the Department of Internal Affairs of Pennsylvania, made conformably to an Act of Assembly approved the 16th day of February, 1833, I have hereunto set my Hand and caused the Seal of said Department to be affixed at Harrisburg, this seventh day of May 1901.

James W. Patta
 Secretary of Internal Affairs.